







KST Series Probe Sampling Valve



Ideal For:

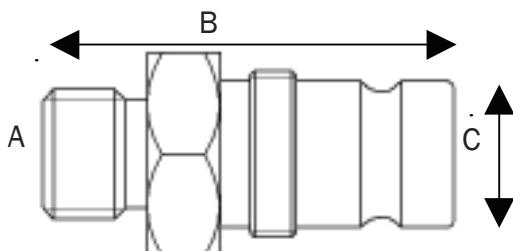
Hydraulics
Transmissions
Industrial
Marine

Engines
Compressors
Construction
Trucking

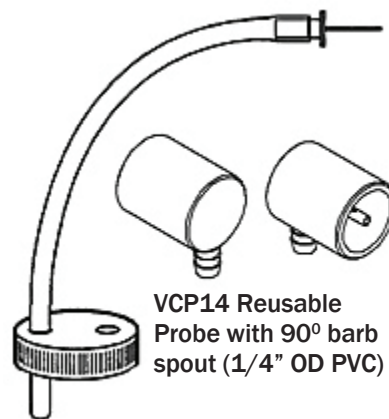
-  **FAST:** Sample pressurized systems in seconds
-  **ACCURATE:** Taps hot active fluid
-  **RELIABLE:** Dual sealing tested for **1 million cycles**
-  **Easy to use probe system**
-  **Rugged metal cap with backup seal**
-  **Choice of threads with seal types**

Order Numbers

Part #	A	B	C	Hex
VC18	1/8" NPTF	1.43" (36.32 mm)	0.5" (12.7 mm)	0.688" (18 mm)
VC14	1/4" NPTF	1.61" (40.89 mm)	0.5" (12.7 mm)	0.688" (18 mm)
VC716	7/16-20 SAE ORB	1.41" (35.81 mm)	0.5" (12.7 mm)	0.688" (18 mm)
VC916	9/16-18 SAE ORB	1.45" (36.83 mm)	0.5" (12.7 mm)	0.688" (18 mm)
VCP14	Reusable Probe	N/A	N/A	N/A



Probe Devices



QDCAP Disposable
Quick Draw Cap & Needle

Operational

Specification	Valve
Sampling Pressure Range	5 psi to 750 psi (0.3 to 52 bar)
Max Operating Pressure	6000 psi (414 bar)
Max Burst Pressure	24000 psi (1655 bar)
Viton™ Seal Temperature	-15 to +400°F (-26 to +204°F)

POLARIS Laboratories, LLC
Toll Free: 877-808-3750
Phone: 317-808-3750
Fax: 317-808-3751
custserv@polarislabs.com
www.polarislabs.com